

May Applique' Butterfly (Cut size 12.5" Finished size 12")

Fabric needed:

- Light blue for background
- Use a 1930's print or small floral for upper wings
- Use a coordinating solid color fabric for lower wings
- Use a solid brown or tone-on-tone brown for butterfly body



Cut one 12 ½" x 12 ½" square of background fabric
(or you can cut it larger, then square up after you finish the applique')

Tip: Pellon SF-101 is a nice light, soft fusible stabilizer... you could fuse it to the wrong side of your background fabric to help prevent your machine applique' stitches from puckering.

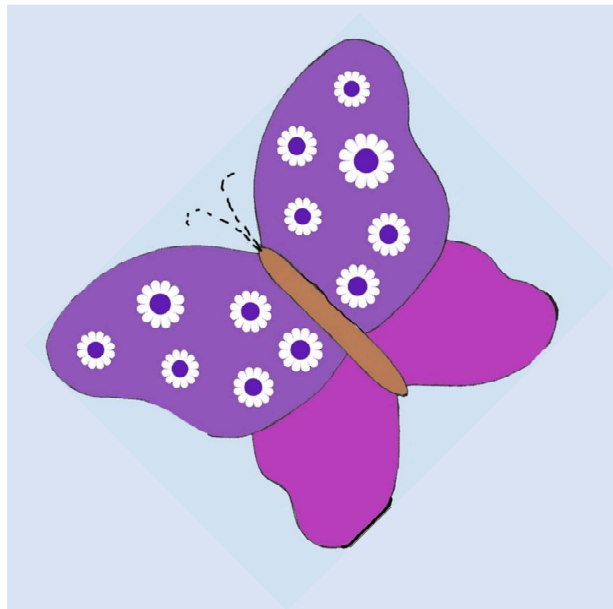
Trace the butterfly template parts onto a lightweight fusible (Heat n' Bond lite, Steam-a-Seam lite, or a similar product).

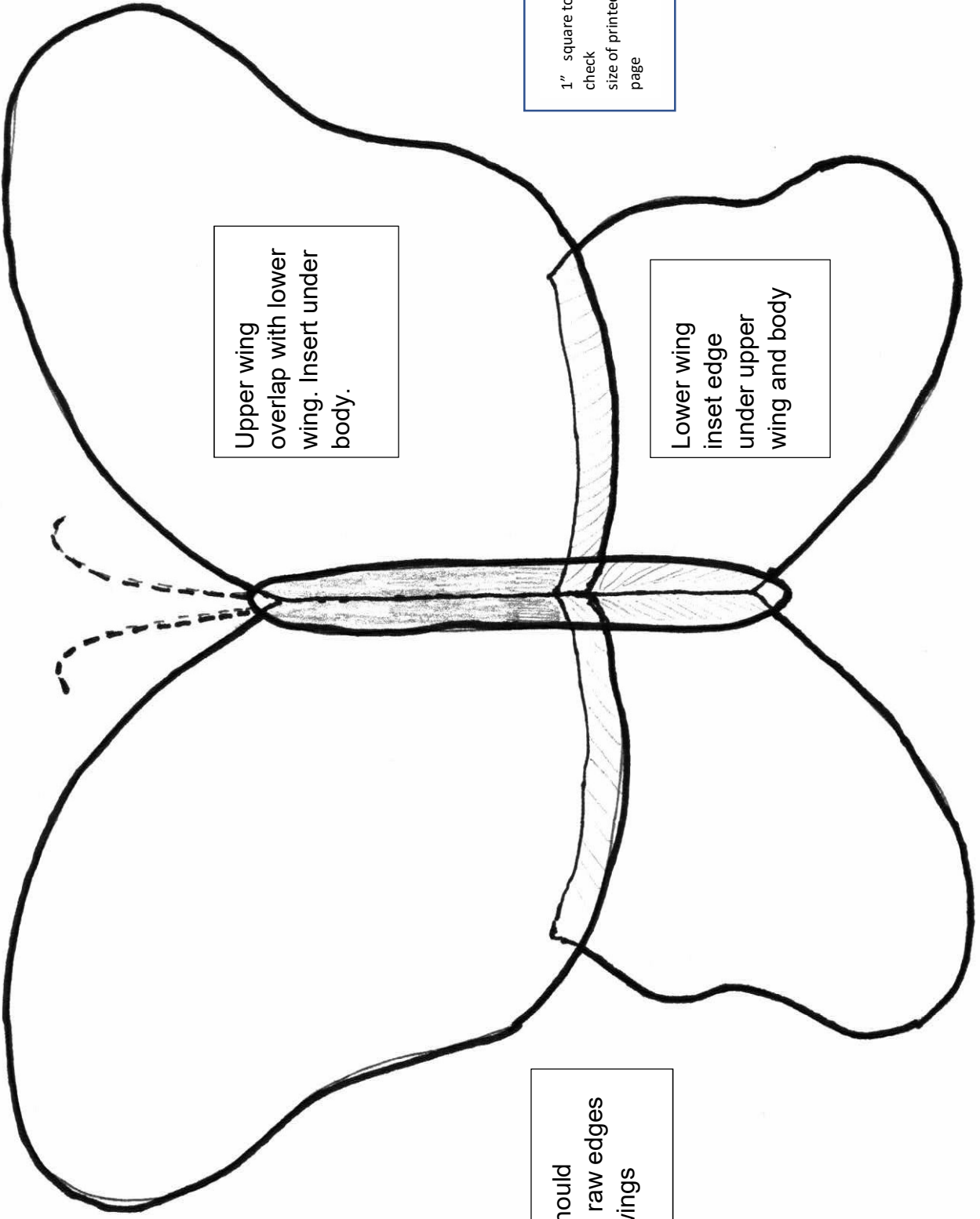
Fuse to the wrong side of fabric pieces then cut on the traced lines.

Fold your background fabric in half on the diagonal. Center the butterfly so its body lines up with the center diagonal. Layer your pieces starting with lower wings, then upper wings, then butterfly body. Fuse to background.

Use matching thread to blanket stitch or zig-zag stitch around the pieces.

Use embroidery floss to do a running stitch for the butterfly antenna





1" square to
check
size of printed
page

Upper wing
overlap with lower
wing. Insert under
body.

Lower wing
inset edge
under upper
wing and body

Body should
overlap raw edges
of the wings